

THIS INSTRUMENT WAS PREPARED BY  
 DAVID P. LINDLEY, PLS  
 OF  
**CAULFIELD and WHEELER, INC.**  
 ENGINEERS - PLANNERS - SURVEYORS  
 7900 GLADES ROAD, SUITE 100  
 BOCA RATON, FLORIDA 33434 - (561)392-1991

# BELLA DELRAY

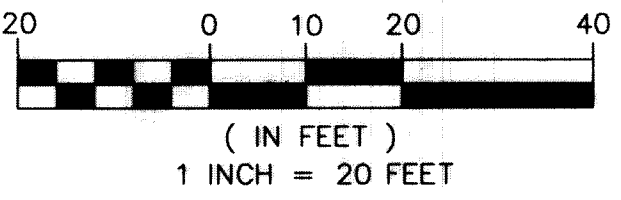
BEING A REPLAT OF A PORTION OF THE REPLAT OF CREST LAKE PARK, ACCORDING TO THE PLAT THEREOF,  
 AS RECORDED IN PLAT BOOK 20, PAGE 38, PUBLIC RECORDS OF PALM BEACH COUNTY, FLORIDA, LYING IN  
 SECTION 8, TOWNSHIP 46 SOUTH, RANGE 43 EAST, CITY OF DELRAY BEACH, PALM BEACH COUNTY, FLORIDA

115

SHEET 2 OF 2



GRAPHIC SCALE



**SURVEY NOTES:**

- IN THOSE CASES WHERE EASEMENTS OF DIFFERENT TYPES CROSS OR OTHERWISE COINCIDE, DRAINAGE EASEMENTS SHALL HAVE FIRST PRIORITY, UTILITY EASEMENTS SHALL HAVE SECOND PRIORITY, ACCESS EASEMENTS SHALL HAVE THIRD PRIORITY, AND ALL OTHER EASEMENTS SHALL BE SUBORDINATE TO THESE WITH THEIR PRIORITIES BEING DETERMINED BY USE RIGHTS GRANTED.
- THERE SHALL BE NO TREES OR SHRUBS PLACED ON UTILITY EASEMENTS WHICH ARE PROVIDED FOR WATER AND SEWER USE OR UPON DRAINAGE EASEMENTS. LANDSCAPING ON OTHER UTILITY EASEMENTS SHALL BE ALLOWED ONLY AFTER CONSENT OF ALL THE UTILITY COMPANIES OCCUPYING SAME.
- THERE MAY BE ADDITIONAL RESTRICTIONS THAT ARE NOT RECORDED ON THIS PLAT THAT MAY BE FOUND IN THE PUBLIC RECORDS OF PALM BEACH COUNTY, FLORIDA.
- ALL RECORDING REFERENCES ARE RECORDED IN THE PUBLIC RECORDS OF PALM BEACH COUNTY, FLORIDA.
- BEARINGS SHOWN HEREON ARE RELATIVE TO THE EAST LINE OF SECTION 8, TOWNSHIP 46 SOUTH, RANGE 43 EAST, SAID LINE BEARING  $N00^{\circ}33'05''W$  RELATIVE TO THE FLORIDA STATE PLANE COORDINATE SYSTEM, EAST ZONE, NORTH AMERICAN DATUM OF 1983 (NO ADJUSTMENT).

**LEGEND/ABBREVIATIONS**

- CL - CENTERLINE
  - LB - LICENSED BUSINESS
  - G.U.E. - GENERAL UTILITY EASEMENT
  - PBCR - PALM BEACH COUNTY RECORDS
  - O.R.B. - OFFICIAL RECORD BOOK
  - PRM - DENOTES SET PERMANENT REFERENCE MONUMENT
- 4" x 4" x 24" CONCRETE MONUMENT WITH ALUMINUM DISK STAMPED "C&W PRM LB3591" UNLESS NOTED OTHERWISE

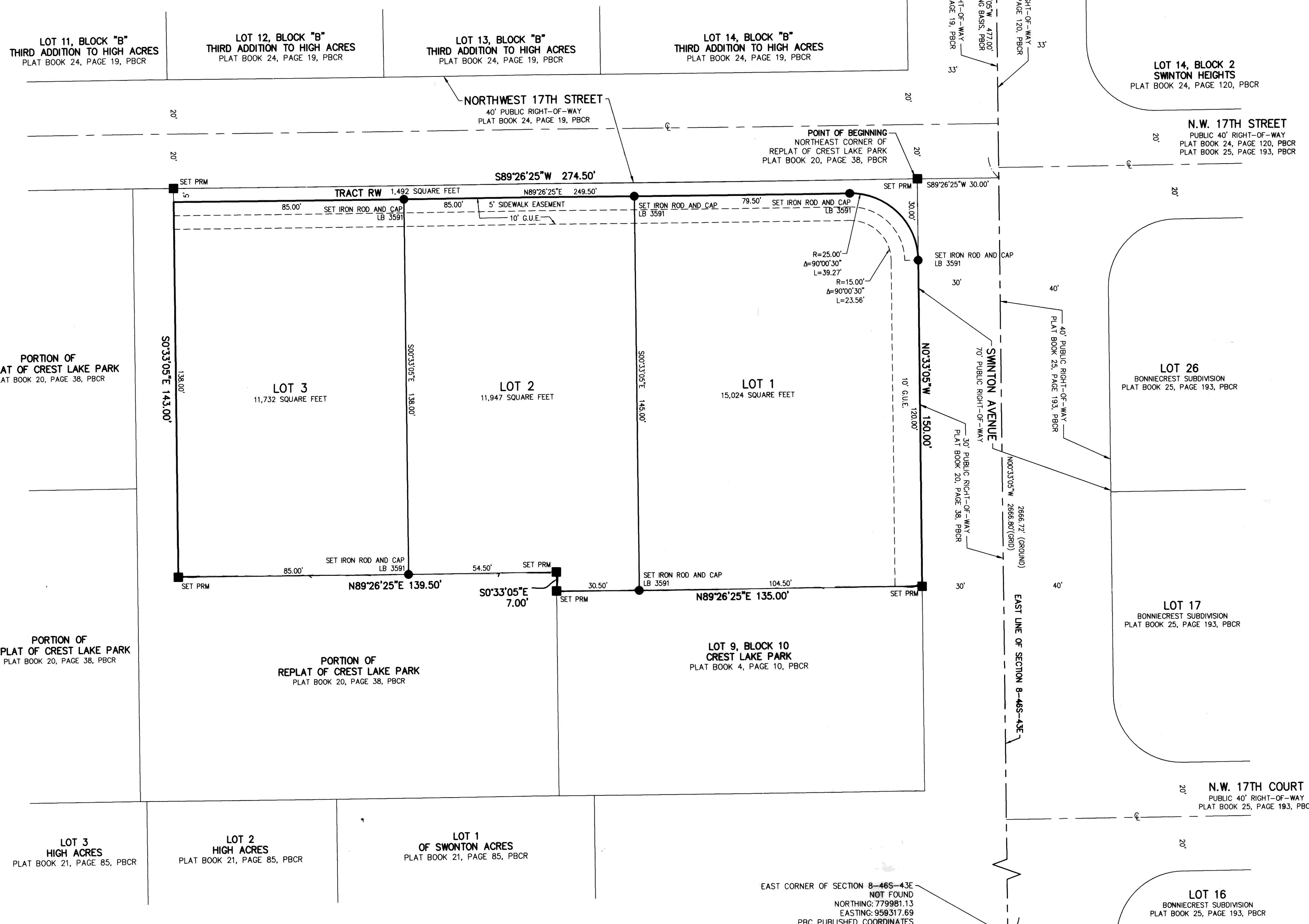
5  
8  
N CORNER OF SECTION 8-46S-43E  
NOT FOUND  
NORTHING: 782623.78  
EASTING: 956580.97  
PBC PUBLISHED COORDINATES

CONTROL POINT "DOGE"  
NOT FOUND  
NORTHING: 782608.46  
EASTING: 961462.72  
PBC PUBLISHED COORDINATES

2170.97'(GROUND)  
2171.04'(GRID)  
S88°57'42"E

NE CORNER OF SECTION 8-46S-43E  
NOT FOUND  
NORTHING: 782647.80  
EASTING: 959292.03  
PBC PUBLISHED COORDINATES

"NOTICE" THIS PLAT, AS RECORDED IN ITS GRAPHIC FORM, IS THE OFFICIAL DEPICTION OF THE SUBDIVIDED LANDS DESCRIBED HEREIN AND WILL IN NO CIRCUMSTANCES BE SUPPLANTED IN AUTHORITY BY ANY OTHER GRAPHIC OR DIGITAL FORM OF THE PLAT. THERE MAY BE ADDITIONAL RESTRICTIONS THAT ARE NOT RECORDED ON THIS PLAT THAT MAY BE FOUND IN THE PUBLIC RECORDS OF PALM BEACH COUNTY.



EAST CORNER OF SECTION 8-46S-43E  
NOT FOUND  
NORTHING: 779981.13  
EASTING: 958317.69  
PBC PUBLISHED COORDINATES